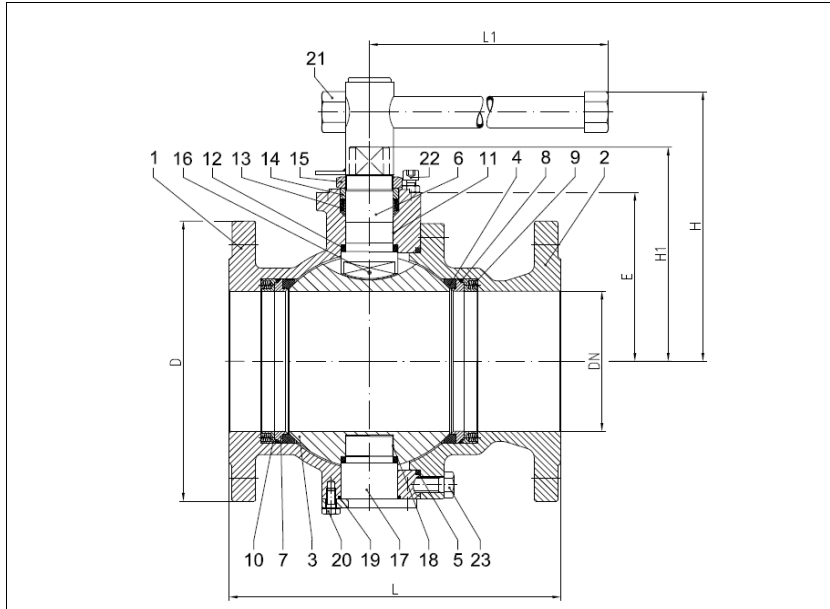


BALL VALVES INTEC

K210, DN80 - DN250, PN16/40
trunnion mounted ball, soft seated,
both sides spring loaded seat rings



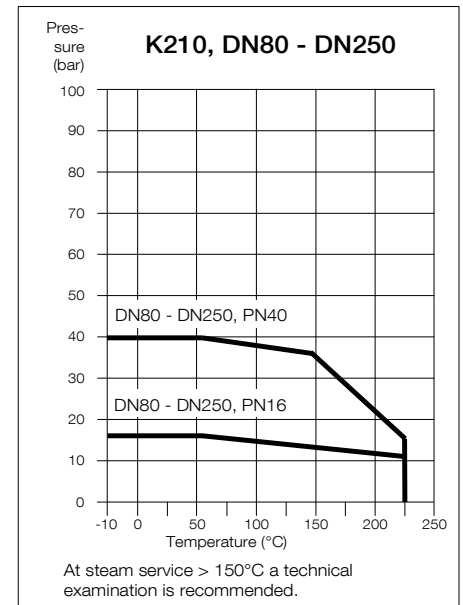
Flanged ball valve
full bore
face to face acc. to EN 558, GR.1
face to face acc. to EN 558, GR.27
flanges acc. to EN 1092

Specification:

Two-piece ball valve with flanges acc. to EN 1092, face to face dimensions acc. to EN 558, GR.1/GR.27, full bore, blow-out-proof stem, body material stainless steel (1.4408) or carbon steel (1.0619), antistatic device, free of non ferrous metals, trunnion mounted ball, seats full chambered, stem packing Graphite/KFGN/KFAM cone ring system dynamic loaded adjustable, top flange DIN EN ISO 5211, approved by PED, certified acc. to GERMAN clean air act VDI 2440, Fire-Safe acc. to API 607 and DIN EN ISO 10497, with lever.

Marking: INTEC K210

No.	Part	Material	Material
Standard design			
1	body	1.0619	1.4408
2	cap	1.0619	1.4408
3	ball	1.4408	
4	seat	KFGN/KFM	
5	body seal	KF	
6	stem	1.4462	
7	seat bearing ring	1.4571/1.4404	
8	seat seal	KF	
9	spiral spring	1.4401	
10	follower ring	1.4571/1.4404	
11	stem bearing	1.4401/KF	
12	below seal	KFGN/Graphite	
13	upper seal	KFAM/Graphite	
14	bearing	PEEK	
15	hex. nut self-locking	A2/1.4301	
16	antistatic element	1.4401/1.4571/1.4404	
17	trunnion (up to DN125 with screwed end)	1.4571/1.4404	
18	bearing	1.4401/KF	
19	trunnion seal	KF	
20	hex. screw (as from DN150)	A4-70	
21	lever	1.4408/1.4308/steel zincplated	
22	stopper	A2	
23	hex. screw	A4-70	
Fire-Safe design			
5	combined body seal	KF-Graphite	
8	seat seal	Graphite	
9	spiral spring	Inconel X750	
11	Fire-Safe seal	Graphite	
	ring	1.4571/1.4404	
	thrust washer	PEEK	
19	trunnion seal	KF-Graphite	



Ordering example:
INTEC K210, DN100, PN40,
GR. 27, 1.4408, Fire-Safe

Other flange connections and materials on request.

Dimensions

DN mm	PN	dimensions (mm)			D	E	H1	top flange ISO	torque Nm *	weight kg		
		H	L1	L (GR. 1)						L (GR. 27)	GR. 1	GR. 27
80	40	194	500	310	180	200	112.5	155	F10	170	24	23
100	16	221.5	500	350	190	220	137	179.5	F12	140	32.5	31.5
100	40	221.5	500	350	190	235	137	179.5	F12	255	33.5	33
125	16	246.5	700	-	325	250	164	206.5	F12	185	-	56.5
125	40	246.5	700	-	325	270	164	206.5	F12	370	-	58.5
150	16	263	700	-	350	285	181	229.5	F12	265	-	81
150	40	263	700	-	350	300	181	229.5	F12	565**	-	85
200	16	304	1000	-	400	340	225	284.5	F14	490	-	153
200	40	304	1000	-	400	375	225	284.5	F14	1110**	-	161
250	16	340.5	1200	-	450	405	261.5	321	F14/F16	760**	-	256
250	40	340.5	1200	-	450	450	261.5	321	F14/F16	1735**	-	274

* Necessary torque measured with treated water at Δ P acc. to pressure class and room temperature.

** gearbox recommended